

# \$384,900 - 316, 649 Marsh Road Ne, Calgary

MLS® #A2211745

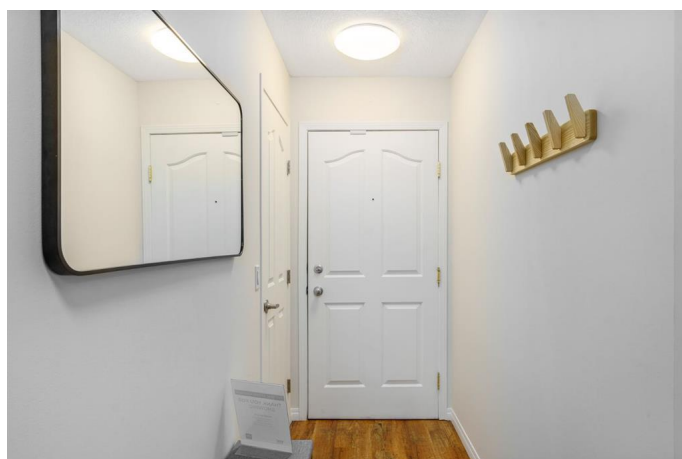
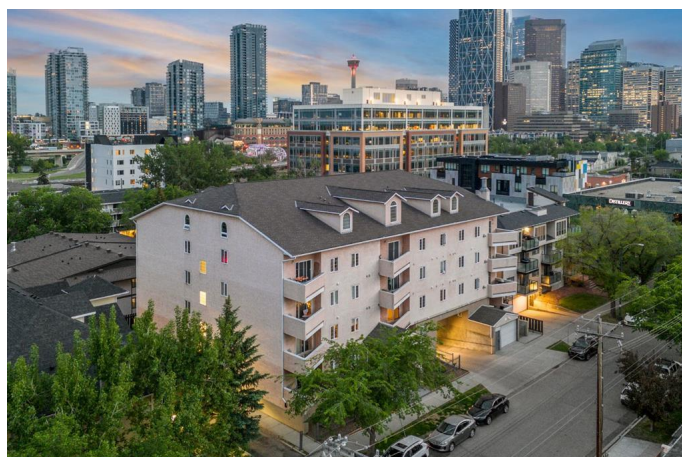
**\$384,900**

2 Bedroom, 2.00 Bathroom, 1,121 sqft

Residential on 0.00 Acres

Bridgeland/Riverside, Calgary, Alberta

Envision yourself living a seamless condo lifestyle in the vibrant community of Bridgeland. Steps from the river pathway system, countless greenspaces, and surrounded by local boutiques, this freshly painted unit has been thoughtfully updated over the years with a clear pride of ownership throughout. Step inside the airy foyer and into the spacious kitchen and accompanying dining area, with upgraded stainless steel appliances including a new dishwasher and electric range, complemented by bright white cabinetry and tile backsplash. To the right is a large secondary bedroom and sizeable closet; this versatile space comes with unlimited potential and can be utilized for hosting guests, roommates, children or even converting into a home office or gym. The adjacent living room is illuminated by natural light, perfectly suited for your plant collection, with loads of space for varied furniture configurations and a beautiful white mantled gas fireplace for gathering around on chilly evenings. A sliding glass patio door leads out onto the private SW facing balcony, with sweeping views of the skyline above and surrounding inner city below. On the other end of the unit is the expansive primary retreat, equally as radiant thanks to two huge windows, and equipped with a functional built-in desk and organizer. A walk-in closet and attached four piece ensuite are favourable inclusions that inject both comfort and practicality into the space. An additional four piece bathroom at the front,



along with dedicated in-suite laundry and a Central Vacuum System, ensure convenience and flexibility. Relish in the ease of condo living in Bridgeland Manor with an assigned underground parking stall and overall affordable condo fees. Ideally situated among an array of amenities including various cafes, restaurants and shops at your fingertips. With quick access to Edmonton Trail and Memorial Drive, and walking distance to numerous inner city attractions including the Downtown Core, this unit is in a prominent pedestrian-oriented location that truly can't be beat.

Built in 1998

**Essential Information**

MLS® #	A2211745
Price	\$384,900
Bedrooms	2
Bathrooms	2.00
Full Baths	2
Square Footage	1,121
Acres	0.00
Year Built	1998
Type	Residential
Sub-Type	Apartment
Style	Single Level Unit
Status	Active

**Community Information**

Address	316, 649 Marsh Road Ne
Subdivision	Bridgeland/Riverside
City	Calgary
County	Calgary
Province	Alberta
Postal Code	T2E 5B4

**Amenities**

Amenities	Elevator(s)
-----------	-------------

Parking Spaces	1
Parking	Underground, Assigned, Parkade

### Interior

Interior Features	Central Vacuum
Appliances	Dishwasher, Dryer, Electric Stove, Microwave, Refrigerator, Washer, Window Coverings, Garage Control(s), Range Hood
Heating	Boiler
Cooling	None
Fireplace	Yes
# of Fireplaces	1
Fireplaces	Gas, Mantle
# of Stories	4

### Exterior

Exterior Features	Balcony
Roof	Asphalt Shingle
Construction	Stucco, Wood Frame, Brick

### Additional Information

Date Listed	June 5th, 2025
Days on Market	38
Zoning	M-C2

### Listing Details

Listing Office	CIR Realty
----------------	------------

Data is supplied by Pillar 9â„¢ MLS® System. Pillar 9â„¢ is the owner of the copyright in its MLS® System. Data is deemed reliable but is not guaranteed accurate by Pillar 9â„¢. The trademarks MLS®, Multiple Listing Service® and the associated logos are owned by The Canadian Real Estate Association (CREA) and identify the quality of services provided by real estate professionals who are members of CREA. Used under license.