

\$624,900 - 355 Pinewind Road Ne, Calgary

MLS® #A2215447

\$624,900

4 Bedroom, 3.00 Bathroom, 1,158 sqft

Residential on 0.11 Acres

Pineridge, Calgary, Alberta

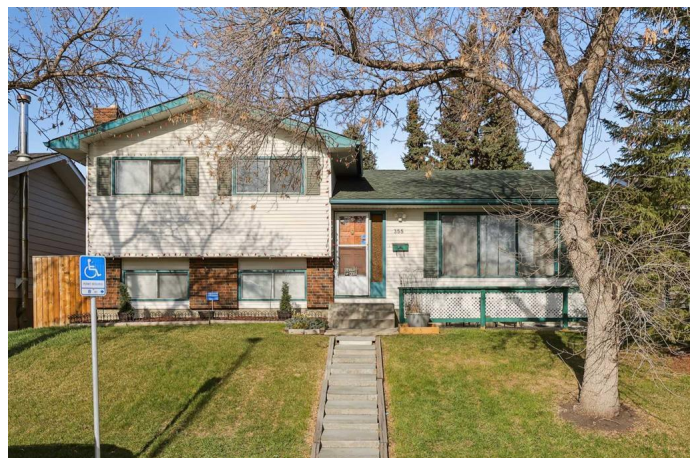
Welcome to 355 Pinewind Road NE—a cherished 4-level split, lovingly maintained by its original owners for over 40 years. Spacious and full of warmth, this home has been the backdrop for raising a family and hosting countless gatherings. Thoughtful updates include fresh main floor paint and new kitchen flooring (2025), a two-tier deck (2024), updated patios and sidewalks (2023), and a new furnace motor (2020) with commercial-grade A/C (2019), 35 year fiberglass shingles with lifetime warranty (2009). Renovated bathrooms, a refreshed master suite, a newer washer and dryer, and a beautifully landscaped yard with planters and a gazebo add to its appeal.

Located in the vibrant community of Pineridge, you’ll enjoy easy access to schools, parks, shopping, restaurants, Village Square Leisure Centre, and major roadways like Memorial Drive and Stoney Trail. This isn’t just a home—it’s a place to build lasting memories. Don’t miss your chance to make it yours!

Built in 1975

Essential Information

MLS® #	A2215447
Price	\$624,900
Bedrooms	4
Bathrooms	3.00



Full Baths	2
Half Baths	1
Square Footage	1,158
Acres	0.11
Year Built	1975
Type	Residential
Sub-Type	Detached
Style	4 Level Split
Status	Active

Community Information

Address	355 Pinewind Road Ne
Subdivision	Pineridge
City	Calgary
County	Calgary
Province	Alberta
Postal Code	T1Y 2H2

Amenities

Parking Spaces	2
Parking	Alley Access, Double Garage Detached, Garage Door Opener, Off Street
# of Garages	2

Interior

Interior Features	Kitchen Island, Laminate Counters, Open Floorplan, See Remarks
Appliances	Dishwasher, Dryer, Microwave, Refrigerator, Stove(s), Washer, Window Coverings
Heating	Forced Air, Natural Gas
Cooling	Central Air
Fireplace	Yes
# of Fireplaces	1
Fireplaces	Family Room, Wood Burning
Has Basement	Yes
Basement	Full, Partially Finished

Exterior

Exterior Features	Garden, Storage
Lot Description	Back Yard, City Lot, Front Yard, Gazebo, Rectangular Lot, Gentle

	Sloping
Roof	Asphalt Shingle
Construction	Vinyl Siding, Wood Frame
Foundation	Poured Concrete

Additional Information

Date Listed	April 30th, 2025
Days on Market	1
Zoning	R-CG

Listing Details

Listing Office	Greater Property Group
----------------	------------------------

Data is supplied by Pillar 9â„¢ MLS® System. Pillar 9â„¢ is the owner of the copyright in its MLS® System. Data is deemed reliable but is not guaranteed accurate by Pillar 9â„¢. The trademarks MLS®, Multiple Listing Service® and the associated logos are owned by The Canadian Real Estate Association (CREA) and identify the quality of services provided by real estate professionals who are members of CREA. Used under license.