

# \$260,900 - 414, 355 Taralake Way Ne, Calgary

MLS® #A2215700

**\$260,900**

2 Bedroom, 1.00 Bathroom, 667 sqft

Residential on 0.00 Acres

Taradale, Calgary, Alberta

Why pay rent when you can buy at this price ??? Welcome Home to a 2 Bed 1 Bath condo unit in the very popular Taradade community of NE Calgary. The unit features a bright and open layout with Living/Dining, Kitchen, 2 good-sized Bedrooms, a 4 Pc Full Bathroom, Laundry, and a large balcony. The unit also comes with an outdoor Parking Stall #20. The Kitchen offers all major appliances, ample cabinetry, and Granite countertop space. The building is well managed and is located in an ideal location with proximity to all amenities.

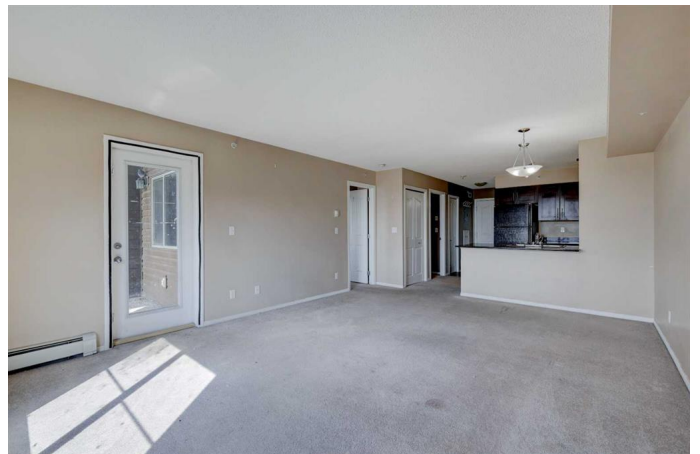
Built in 2013

## Essential Information

MLS® #	A2215700
Price	\$260,900
Bedrooms	2
Bathrooms	1.00
Full Baths	1
Square Footage	667
Acres	0.00
Year Built	2013
Type	Residential
Sub-Type	Apartment
Style	Single Level Unit
Status	Active

## Community Information

Address 414, 355 Taralake Way Ne



Subdivision	Taradale
City	Calgary
County	Calgary
Province	Alberta
Postal Code	T3J0M3

## Amenities

Amenities	Elevator(s)
Parking Spaces	1
Parking	Parking Pad

## Interior

Interior Features	Breakfast Bar, Granite Counters
Appliances	Dishwasher, Dryer, Electric Stove, Range Hood, Refrigerator, Washer
Heating	Baseboard
Cooling	None
# of Stories	4

## Exterior

Exterior Features	Balcony
Construction	Stone, Vinyl Siding, Wood Frame

## Additional Information

Date Listed	May 2nd, 2025
Days on Market	68
Zoning	M-2

## Listing Details

Listing Office	AM/PM Properties
----------------	------------------

Data is supplied by Pillar 9â„¢ MLSÂ® System. Pillar 9â„¢ is the owner of the copyright in its MLSÂ® System. Data is deemed reliable but is not guaranteed accurate by Pillar 9â„¢. The trademarks MLSÂ®, Multiple Listing ServiceÂ® and the associated logos are owned by The Canadian Real Estate Association (CREA) and identify the quality of services provided by real estate professionals who are members of CREA. Used under license.