

\$643,900 - 20 Bridleridge Circle Sw, Calgary

MLS® #A2218177

\$643,900

4 Bedroom, 4.00 Bathroom, 1,358 sqft

Residential on 0.07 Acres

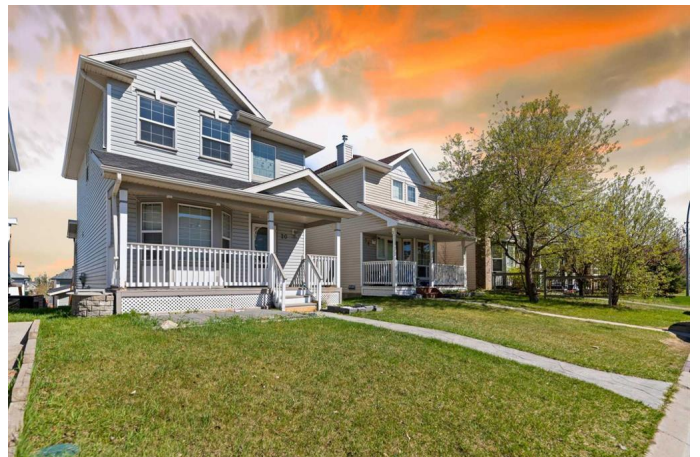
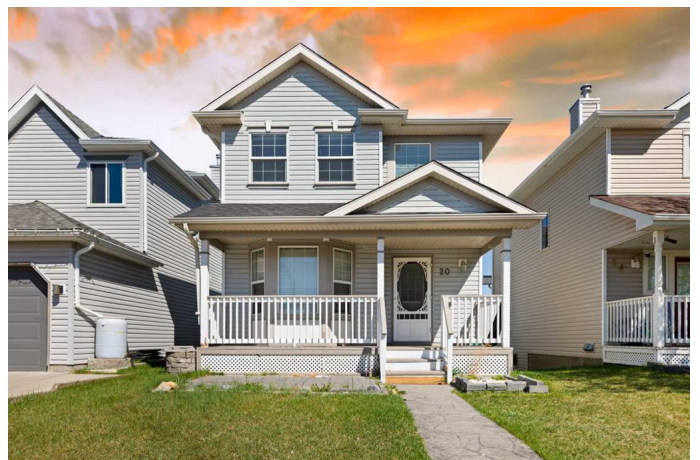
Bridlewood, Calgary, Alberta

Welcome to this delightful two-storey walkout home, perfectly situated in the heart of the family-friendly Bridlewood community. Offering over 1,350 square feet of thoughtfully designed living space, this residence beautifully balances comfort, style, and functionality.

Upon entry, you're welcomed into a bright front living and dining area—ideal for hosting guests or enjoying family meals. A convenient half bathroom enhances the practicality of the main floor. Toward the rear, a cozy family room flows into a beautifully refaced kitchen featuring upgraded rollouts, pot drawers, and a spacious breakfast nook—perfect for casual dining or your morning coffee.

Upstairs, you'll find a generous primary bedroom with a cheater door to a large full bathroom, complete with a relaxing tub. Two additional bedrooms offer flexibility for children, guests, or a home office. One of these rooms includes elegant French doors that adjoin the primary bedroom, adding a layer of versatility.

Step outside onto the expansive deck just off the kitchen—an ideal spot for summer BBQs or soaking up the sun. The fenced backyard offers both privacy and security, while the fully finished walkout basement (illegal suite) provides additional living space and direct access to a detached double garage.



Notable upgrades include on-demand hot water (tankless), central air conditioning, and a handy storage shed. With nearby access to public transit, schools, and major roadways, commuting around the city is easy and efficient.

Whether you're searching for a warm family home or a welcoming place to entertain, this Bridlewood gem offers comfort, convenience, and a true sense of community. Welcome home.

Built in 2002

Essential Information

MLS® #	A2218177
Price	\$643,900
Bedrooms	4
Bathrooms	4.00
Full Baths	3
Half Baths	1
Square Footage	1,358
Acres	0.07
Year Built	2002
Type	Residential
Sub-Type	Detached
Style	2 Storey
Status	Active

Community Information

Address	20 Bridleridge Circle Sw
Subdivision	Bridlewood
City	Calgary
County	Calgary
Province	Alberta
Postal Code	T2Y 4C7

Amenities

Parking Spaces	2
Parking	Double Garage Detached, Off Street
# of Garages	2

Interior

Interior Features	Tankless Hot Water
Appliances	Dishwasher, Dryer, Microwave, Refrigerator, Washer, Stove(s)
Heating	Forced Air, Fireplace(s)
Cooling	Central Air
Fireplace	Yes
# of Fireplaces	1
Fireplaces	Gas
Has Basement	Yes
Basement	Finished, Full, Walk-Out

Exterior

Exterior Features	Balcony
Lot Description	Back Lane, Rectangular Lot
Roof	Asphalt Shingle
Construction	Concrete, Vinyl Siding, Wood Frame
Foundation	Poured Concrete

Additional Information

Date Listed	May 6th, 2025
Days on Market	58
Zoning	R-G

Listing Details

Listing Office	eXp Realty
----------------	------------

Data is supplied by Pillar 9â„¢ MLSÂ® System. Pillar 9â„¢ is the owner of the copyright in its MLSÂ® System. Data is deemed reliable but is not guaranteed accurate by Pillar 9â„¢. The trademarks MLSÂ®, Multiple Listing ServiceÂ® and the associated logos are owned by The Canadian Real Estate Association (CREA) and identify the quality of services provided by real estate professionals who are members of CREA. Used under license.