

# \$597,000 - Rr 20 294152, Rural Starland County

MLS® #A2218565

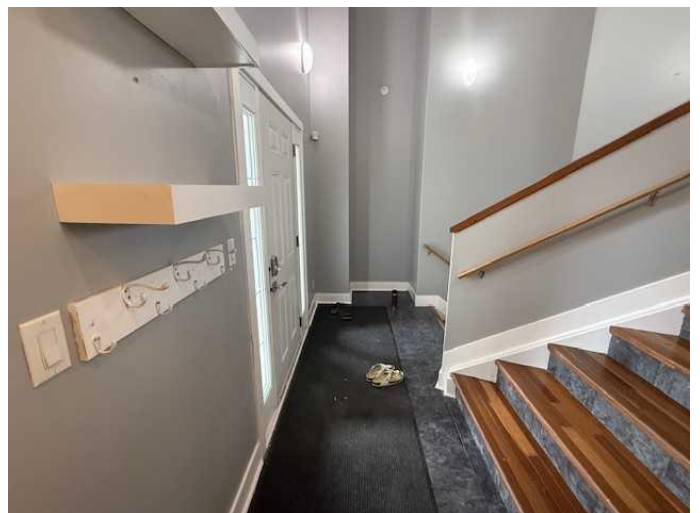
**\$597,000**

5 Bedroom, 3.00 Bathroom, 1,480 sqft  
Residential on 3.42 Acres

NONE, Rural Starland County, Alberta

Country living only 8 minutes north of Drumheller. A quiet oasis with several trees just minutes from town on municipal water. Check out this custom built home on 3.42 acres that features open concept main floor living, with vaulted ceilings, hardwood floors, luxury vinyl plank flooring and central vacuum.

Snuggle up on cold winter nights or rainy days by the natural gas fireplace. The focal point of this home is definitely the stunning kitchen, featuring Maple cabinets, granite countertops, eat up kitchen island, dining area and stainless steel appliance package that includes a natural gas stove and dryer. The rear deck is features a breathtaking view of a coulee. This home boasts loads of natural sunlight for plant lovers with an abundance of windows with great views in all directions. Featuring 5 bedrooms 2.5 baths, main floor laundry and a heated double attached garage this is an Ideal home for a growing family. For the kids there is a ground level trampoline, a play structure and a zip line. There also a large garden area by the shop that was transformed into a BMX bike track complete with jumps. There is a large older shop with a concrete floor which you could demolish the existing shell and start over, building the shop of your dreams. Don't wait book your showing today !



Built in 2009

## Essential Information

|                |                                       |
|----------------|---------------------------------------|
| MLS® #         | A2218565                              |
| Price          | \$597,000                             |
| Bedrooms       | 5                                     |
| Bathrooms      | 3.00                                  |
| Full Baths     | 2                                     |
| Half Baths     | 1                                     |
| Square Footage | 1,480                                 |
| Acres          | 3.42                                  |
| Year Built     | 2009                                  |
| Type           | Residential                           |
| Sub-Type       | Detached                              |
| Style          | Acreage with Residence, 3 Level Split |
| Status         | Active                                |

### **Community Information**

|             |                       |
|-------------|-----------------------|
| Address     | Rr 20 294152          |
| Subdivision | NONE                  |
| City        | Rural Starland County |
| County      | Starland County       |
| Province    | Alberta               |
| Postal Code | T0J 2C0               |

### **Amenities**

|                |                        |
|----------------|------------------------|
| Utilities      | Electricity Connected  |
| Parking Spaces | 6                      |
| Parking        | Double Garage Attached |
| # of Garages   | 2                      |

### **Interior**

|                   |  |
|-------------------|--|
| Interior Features | Breakfast Bar, Central Vacuum, Granite Counters, High Ceilings, Jetted Tub, Kitchen Island, No Smoking Home, Pantry, Vinyl Windows, Track Lighting |
| Appliances        | Dishwasher, Garage Control(s), Gas Stove, Microwave, Refrigerator, Washer, Window Coverings, Gas Dryer   |
| Heating           | Forced Air, Natural Gas  |
| Cooling           | None   |
| Fireplace         | Yes  |
| # of Fireplaces   | 1  |
| Fireplaces        | Gas  |

|              |                          |
|--------------|--------------------------|
| Has Basement | Yes                      |
| Basement     | Full, Partially Finished |

## Exterior

|                   |   |
|-------------------|---|
| Exterior Features | None  |
| Lot Description   | Cleared, Garden, Irregular Lot, Lawn, Low Maintenance Landscape |
| Roof              | Asphalt Shingle   |
| Construction      | Vinyl Siding, Wood Frame  |
| Foundation        | Wood  |

## Additional Information

|                |                |
|----------------|----------------|
| Date Listed    | May 12th, 2025 |
| Days on Market | 35             |
| Zoning         | CR             |

## Listing Details

|                |            |
|----------------|------------|
| Listing Office | RE/MAX Now |
|----------------|------------|

Data is supplied by Pillar 9â„¢ MLSÂ® System. Pillar 9â„¢ is the owner of the copyright in its MLSÂ® System. Data is deemed reliable but is not guaranteed accurate by Pillar 9â„¢. The trademarks MLSÂ®, Multiple Listing ServiceÂ® and the associated logos are owned by The Canadian Real Estate Association (CREA) and identify the quality of services provided by real estate professionals who are members of CREA. Used under license.