

\$668,888 - 135 Edith Drive Nw, Calgary

MLS® #A2228656

\$668,888

3 Bedroom, 3.00 Bathroom, 1,565 sqft
Residential on 0.06 Acres

Glacier Ridge, Calgary, Alberta

Welcome to Glacier Ridge â€œ One of Calgaryâ€™s Most Sought-After New Communities!

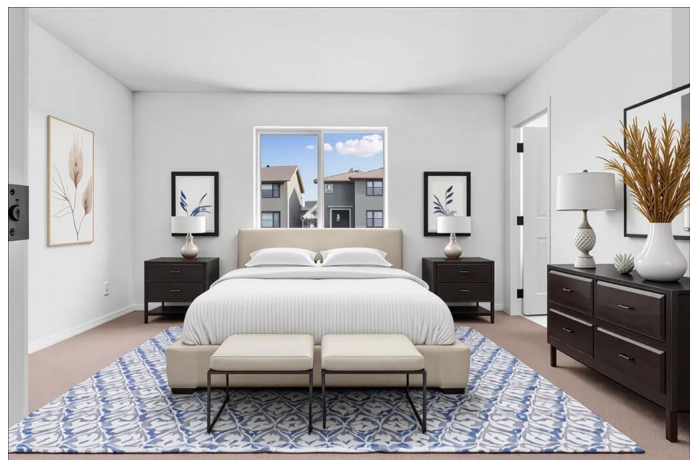
This beautifully designed 2024-built detached home offers over 1,500 sq ft of thoughtfully planned living space, featuring 3 spacious bedrooms, 2.5 bathrooms, and modern finishes throughout â€œ perfect for families, professionals, or first-time buyers.

The main floor boasts an open-concept layout with large windows that fill the space with natural light. A stylish kitchen with contemporary cabinetry and a central island flows seamlessly into the dining and living areas, ideal for entertaining or cozy family evenings.

Upstairs, the primary suite features a walk-in closet and private ensuite, accompanied by two additional bedrooms and a conveniently located upper-level laundry area.

The unfinished basement offers excellent development potential with 9-foot ceilings, a rough-in for a bathroom, and space for future laundry â€œ a blank canvas ready for your vision.

Located in vibrant Glacier Ridge, this home is surrounded by exceptional amenities. Enjoy easy access to Walmart, Costco, No Frills, T&T, CO-OP, and Active Start Daycare. Parks, school bus stops, and the upcoming Glacier Ridge Village (a vibrant community hub similar to Vivo) are all within walking distance. Families will appreciate the proximity to a wide range of schooling options including Public,



Catholic, Islamic (Al Amal Academy), and Private schools (Bears paw Christian School) – all easily accessible from this central location.

With quick access to major routes, this home combines convenience, comfort, and lifestyle in one of NW Calgary’s most desirable new communities. Don’t miss this opportunity – book your private showing today

Built in 2024

Essential Information

MLS® #	A2228656
Price	\$668,888
Bedrooms	3
Bathrooms	3.00
Full Baths	2
Half Baths	1
Square Footage	1,565
Acres	0.06
Year Built	2024
Type	Residential
Sub-Type	Detached
Style	2 Storey
Status	Active

Community Information

Address	135 Edith Drive Nw
Subdivision	Glacier Ridge
City	Calgary
County	Calgary
Province	Alberta
Postal Code	t3r1s6

Amenities

Parking Spaces	2
Parking	Off Street, Parking Pad

Interior

Interior Features	No Animal Home, No Smoking Home, Open Floorplan, Pantry, Quartz Counters, See Remarks, Walk-In Closet(s)
Appliances	Dishwasher, Electric Stove, Microwave, Range Hood, Refrigerator, Washer/Dryer
Heating	Forced Air
Cooling	None
Has Basement	Yes
Basement	Full, Unfinished

Exterior

Exterior Features	None
Lot Description	Back Lane, Back Yard, Level, Street Lighting
Roof	Asphalt Shingle
Construction	Concrete, Vinyl Siding, Wood Frame
Foundation	Poured Concrete

Additional Information

Date Listed	June 6th, 2025
Days on Market	40
Zoning	R-G

Listing Details

Listing Office	Real Broker
----------------	-------------

Data is supplied by Pillar 9â„¢ MLS® System. Pillar 9â„¢ is the owner of the copyright in its MLS® System. Data is deemed reliable but is not guaranteed accurate by Pillar 9â„¢. The trademarks MLS®, Multiple Listing Service® and the associated logos are owned by The Canadian Real Estate Association (CREA) and identify the quality of services provided by real estate professionals who are members of CREA. Used under license.