

# \$349,800 - 107, 6000 Somervale Court Sw, Calgary

MLS® #A2236228

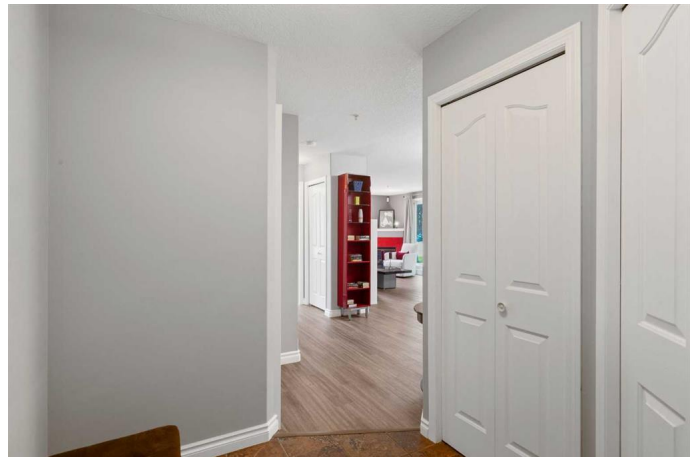
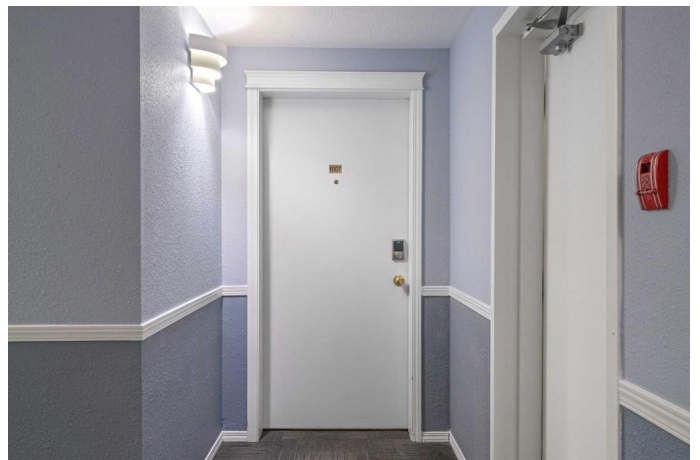
**\$349,800**

2 Bedroom, 2.00 Bathroom, 960 sqft

Residential on 0.00 Acres

Somerset, Calgary, Alberta

Welcome to Somerset Crossing! This spacious 2-bedroom, 2-bathroom south-facing unit offers 960sf of comfortable, updated living space—all conveniently located on the ground floor of a well-managed complex. Step inside to an open-concept layout combining the living room, dining area, and kitchen—perfect for both everyday living and entertaining. The kitchen features epoxy granite countertops, ample cabinetry, a breakfast bar, garburator and high end Bosch appliances that are only 6 years old. The primary bedroom is a generous size and includes a walk-through custom closet and a private 3-piece ensuite. The second bedroom, currently used as a home office, is situated near the main 4-piece bathroom with a jacuzzi tub, and you'll also find in-suite laundry and a dedicated storage space on the outside patio. This END UNIT enjoys extra privacy and natural light, and boasts a large private patio that faces peaceful green space and mature trees—ideal for relaxing or a BBQ. You'll appreciate the durable vinyl plank flooring (installed in 2020) throughout the home. ADT security system is installed. Parking is a breeze with two stalls: one titled underground and the other an assigned surface stall located conveniently across from the patio. Dogs and cats are permitted with Board approval. All utilities are included in the condo fees, making this a truly hassle-free homeownership or investment opportunity. Situated just minutes from the Bridlewood/Somerset LRT station,



YMCA, Walmart, shopping, dining, and other amenities, this location can't be beat! Don't forget to check out the 3D video tour.

Built in 2000

### Essential Information

MLS® #	A2236228
Price	\$349,800
Bedrooms	2
Bathrooms	2.00
Full Baths	2
Square Footage	960
Acres	0.00
Year Built	2000
Type	Residential
Sub-Type	Apartment
Style	Single Level Unit
Status	Active

### Community Information

Address	107, 6000 Somervale Court Sw
Subdivision	Somerset
City	Calgary
County	Calgary
Province	Alberta
Postal Code	T2Y 4J4

### Amenities

Amenities	Elevator(s), Secured Parking, Visitor Parking
Parking Spaces	2
Parking	Assigned, Parkade, Stall, Titled, Underground
# of Garages	1

### Interior

Interior Features	Breakfast Bar, Laminate Counters, Open Floorplan, Vinyl Windows, Jetted Tub
Appliances	Dishwasher, Electric Range, Garage Control(s), Microwave Hood Fan, Refrigerator, Washer/Dryer Stacked, Window Coverings

Heating	Baseboard, Natural Gas, Hot Water
Cooling	None
Fireplace	Yes
# of Fireplaces	1
Fireplaces	Gas, Glass Doors, Living Room, Mantle, Blower Fan
# of Stories	4

## Exterior

Exterior Features	BBQ gas line, Storage
Roof	Flat, Rubber
Construction	Vinyl Siding, Wood Frame
Foundation	Poured Concrete

## Additional Information

Date Listed	July 8th, 2025
Days on Market	9
Zoning	M-C2 d75

## Listing Details

Listing Office	Royal LePage Benchmark
----------------	------------------------

Data is supplied by Pillar 9â„¢ MLS® System. Pillar 9â„¢ is the owner of the copyright in its MLS® System. Data is deemed reliable but is not guaranteed accurate by Pillar 9â„¢. The trademarks MLS®, Multiple Listing Service® and the associated logos are owned by The Canadian Real Estate Association (CREA) and identify the quality of services provided by real estate professionals who are members of CREA. Used under license.