

\$310,000 - 103, 151 Panatella Landing Nw, Calgary

MLS® #A2236379

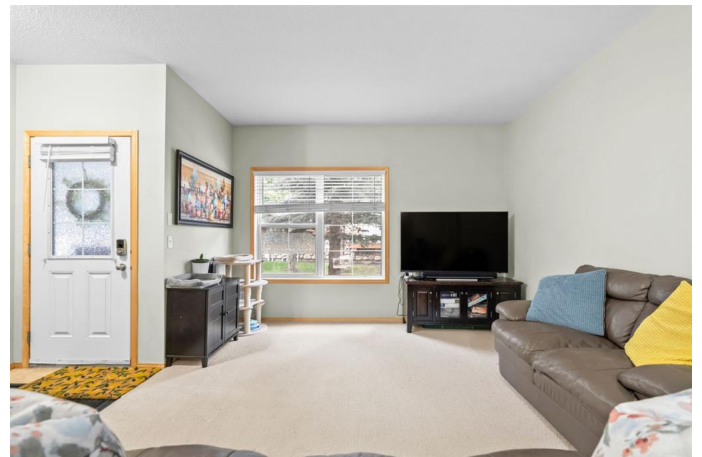
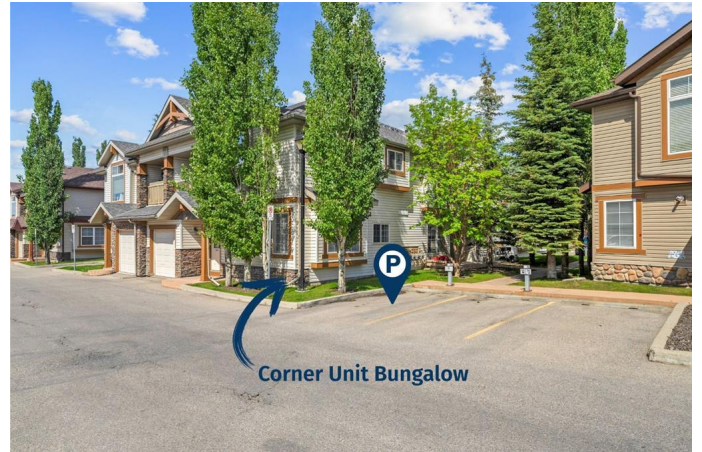
\$310,000

2 Bedroom, 1.00 Bathroom, 988 sqft

Residential on 0.00 Acres

Panorama Hills, Calgary, Alberta

PANORAMA HILLS' RAREST: Move-In-Ready Corner Bungalow with In-Floor Heating, \$0 Reno Costs, NEW APPLIANCES + LOWEST CONDO FEES (\$220!) in the area! Welcome to a bright 988 sq ft ground-level corner unit bungalow in a well-managed community. RARE CORNER LOCATION: This exceptional South facing location floods the open-concept living space with abundant natural light through numerous windows. IN-FLOOR HEATING & EFFICIENCY: Enjoy year-round comfort and energy efficiency with radiant in-floor heating throughout. MODERN KITCHEN: The upgraded kitchen boasts ample counter space, a pantry, and a functional island featuring a sink, power outlets, a built-in dishwasher, and a breakfast bar. FLEX CORNER COUNTER: Just off the kitchen, discover a versatile corner counter perfect for working from home, hobbies, or projects. BRAND-NEW UPGRADES: Benefit from brand-new premium appliances. THOUGHTFUL BATHROOM: The stylish 4-piece bathroom features a large countertop with generous cupboard space and a built-in linen closet for easy towel access. COZY MASTER RETREAT: The large master bedroom offers abundant natural light and features a charming, cozy window seat â€“ your perfect reading nook. ADDITIONAL BEDROOM: A second comfortable bedroom provides flexible space. TWO CONVENIENT STORAGE AREAS: Enjoy ample storage with dedicated space in the laundry room plus an



additional larger storage room nearby.

IN-UNIT LAUNDRY: Practicality is assured with laundry facilities right within your home.

PRIVATE PATIO: Step directly outside to your own private patio area, ideal for relaxing and enjoying fresh air. DEDICATED PARKING:

Your private, assigned parking stall is located just steps from your front door, with plentiful visitor parking available. PET-FRIENDLY

COMMUNITY: Panorama Landing is a pet-friendly complex (pets welcome with Board approval). FAMILY-FRIENDLY AMENITIES: A beautiful playground is situated within the complex for easy access to playtime.

UNBEATABLE LOCATION: Situated in the heart of Panorama Hills, enjoy immediate access to parks, diverse shopping, dining options, and top-rated schools. EFFORTLESS

COMMUTING: Benefit from quick access to public transit, Stoney Trail, Deerfoot Trail, and YYC Airport. Do not miss this opportunity to own a home with modern upgrades and low condo fees in this highly sought-after community.

Built in 2008

Essential Information

MLS® #	A2236379
Price	\$310,000
Bedrooms	2
Bathrooms	1.00
Full Baths	1
Square Footage	988
Acres	0.00
Year Built	2008
Type	Residential
Sub-Type	Row/Townhouse
Style	Bungalow
Status	Active

Community Information

Address	103, 151 Panatella Landing Nw
Subdivision	Panorama Hills
City	Calgary
County	Calgary
Province	Alberta
Postal Code	T3K0K8

Amenities

Amenities	Recreation Facilities, Visitor Parking
Parking Spaces	1
Parking	Additional Parking, Assigned, Stall

Interior

Interior Features	Breakfast Bar, Ceiling Fan(s), Kitchen Island, Open Floorplan, Pantry
Appliances	Dishwasher, Electric Range, Microwave Hood Fan, Refrigerator, Washer/Dryer
Heating	In Floor
Cooling	None
Basement	None

Exterior

Exterior Features	Playground
Lot Description	Corner Lot, Landscaped, Private
Roof	Asphalt Shingle
Construction	Stone, Vinyl Siding, Wood Frame
Foundation	Poured Concrete

Additional Information

Date Listed	July 4th, 2025
Days on Market	11
Zoning	DC (pre 1P2007)
HOA Fees	210
HOA Fees Freq.	ANN

Listing Details

Listing Office	LPT Realty
----------------	------------

Data is supplied by Pillar 9â„¢ MLS® System. Pillar 9â„¢ is the owner of the copyright in its MLS® System. Data is deemed reliable but is not guaranteed accurate by Pillar 9â„¢. The trademarks MLS®, Multiple Listing Service® and the associated logos are owned by The Canadian Real Estate Association (CREA) and identify the quality of services provided by real estate professionals who are members of CREA. Used under license.