

# \$294,900 - 112, 2000 Somervale Court Sw, Calgary

MLS® #A2240749

**\$294,900**

2 Bedroom, 2.00 Bathroom, 835 sqft

Residential on 0.00 Acres

Somerset, Calgary, Alberta

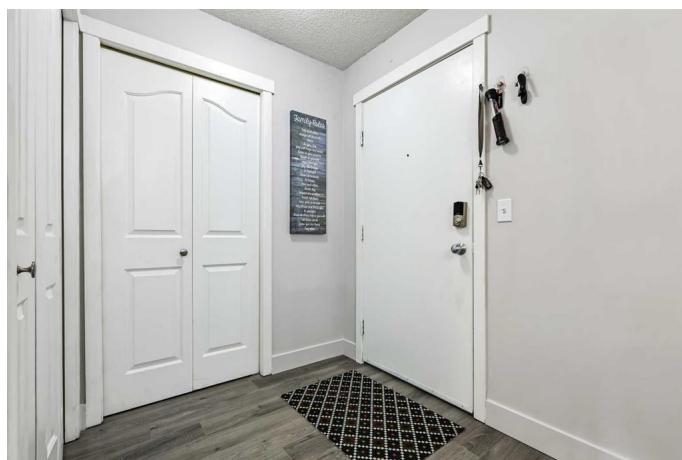
Welcome to this spacious ground floor 2 bed, 2 bath end unit in the heart of Somerset! Enjoy an open-concept layout with a functional kitchen, bright living area, and direct access to a private patio—perfect for morning coffee or easy pet access. The primary bedroom features a walk-through closet and private ensuite. This unit includes in-suite laundry, assigned parking, and is part of a well-managed building with condo fees that cover electricity, heat, gas, and maintenance. Just steps from the LRT, shopping, restaurants, and parks—ideal for first-time buyers, downsizers, or investors!

Built in 2001

## Essential Information

MLS® #	A2240749
Price	\$294,900
Bedrooms	2
Bathrooms	2.00
Full Baths	2
Square Footage	835
Acres	0.00
Year Built	2001
Type	Residential
Sub-Type	Apartment
Style	Single Level Unit
Status	Active

## Community Information



Address	112, 2000 Somervale Court Sw
Subdivision	Somerset
City	Calgary
County	Calgary
Province	Alberta
Postal Code	T2Y 4J1

### **Amenities**

Amenities	Parking
Parking Spaces	1
Parking	Stall

### **Interior**

Interior Features	See Remarks
Appliances	Dishwasher, Microwave, Refrigerator, Stove(s), Washer/Dryer
Heating	Baseboard
Cooling	None
Fireplace	Yes
# of Fireplaces	1
Fireplaces	Gas
# of Stories	4

### **Exterior**

Exterior Features	Other, Outdoor Grill
Lot Description	See Remarks
Construction	Concrete, Stone, Vinyl Siding

### **Additional Information**

Date Listed	July 22nd, 2025
Days on Market	6
Zoning	M-C2 d75

### **Listing Details**

Listing Office	Real Estate Professionals Inc.
----------------	--------------------------------

Data is supplied by Pillar 9â„¢ MLS® System. Pillar 9â„¢ is the owner of the copyright in its MLS® System. Data is deemed reliable but is not guaranteed accurate by Pillar 9â„¢. The trademarks MLS®, Multiple Listing Service® and the associated logos are owned by The Canadian Real Estate Association (CREA) and identify the quality of services provided by real estate professionals who are members of CREA. Used under license.