

\$290,000 - 106, 2106 Valleyview Park Se, Calgary

MLS® #A2242087

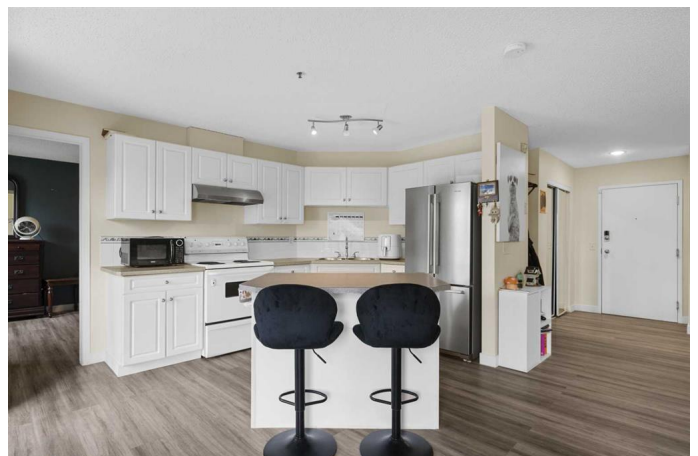
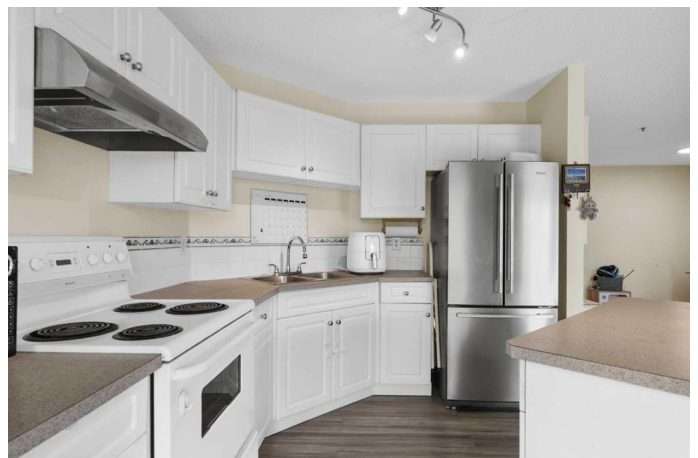
\$290,000

2 Bedroom, 2.00 Bathroom, 970 sqft

Residential on 0.00 Acres

Dover, Calgary, Alberta

Welcome to this beautifully updated and spacious main floor unit in Valleyview Park Place, offering 969.75 sqft. of stylish and functional living in the vibrant community of Dover. This 2-bedroom, 2-bathroom condo features a spacious open-concept layout with new modern vinyl plank flooring, a sleek white kitchen accented by a newer stainless-steel refrigerator, and a large kitchen island with a convenient breakfast bar—perfect for both entertaining and casual dining. The generous dining area seamlessly complements the space, offering the ideal setting for hosting friends and family. The cozy living room features a gas fireplace and opens onto a ground-level patio with a gas line for your BBQ—ideal for summer evenings. The primary suite features a generous walk-in closet and a private 4-piece ensuite for added comfort, while the second bedroom offers versatile space—perfect as a guest room or home office—with a second full 4-piece bathroom conveniently just steps away. Additional highlights include in-suite laundry with storage, a central vacuum system, tasteful updates throughout, and a titled, heated underground parking stall, along with ample visitor parking! This pet-friendly complex is nestled just steps from Valleyview Park, off-leash dog parks, Inglewood Golf & Curling Club, and scenic Bow River pathways. With all utilities included in the condo fees, and close proximity to schools, transit, shopping, International Avenue, and major routes like



Deerfoot and Barlow Trailâ€™this
move-in-ready home offers unbeatable value
and convenience!

Built in 2000

Essential Information

| | |
|----------------|-------------------|
| MLS® # | A2242087 |
| Price | \$290,000 |
| Bedrooms | 2 |
| Bathrooms | 2.00 |
| Full Baths | 2 |
| Square Footage | 970 |
| Acres | 0.00 |
| Year Built | 2000 |
| Type | Residential |
| Sub-Type | Apartment |
| Style | Single Level Unit |
| Status | Active |

Community Information

| | |
|-------------|------------------------------|
| Address | 106, 2106 Valleyview Park Se |
| Subdivision | Dover |
| City | Calgary |
| County | Calgary |
| Province | Alberta |
| Postal Code | T2B 3R6 |

Amenities

| | |
|----------------|---------------------------------------|
| Amenities | Elevator(s), Parking, Visitor Parking |
| Parking Spaces | 1 |
| Parking | Underground |

Interior

| | |
|-------------------|---|
| Interior Features | Breakfast Bar, Kitchen Island |
| Appliances | Dishwasher, Electric Stove, Microwave, Range Hood, Refrigerator, Washer/Dryer |
| Heating | Baseboard, Hot Water |
| Cooling | None |

| | |
|-----------------|-----|
| Fireplace | Yes |
| # of Fireplaces | 1 |
| Fireplaces | Gas |
| # of Stories | 3 |

Exterior

| | |
|-------------------|--------------------------------------|
| Exterior Features | BBQ gas line, Lighting, Rain Gutters |
| Construction | Vinyl Siding, Wood Frame |

Additional Information

| | |
|----------------|-----------------|
| Date Listed | July 23rd, 2025 |
| Days on Market | 6 |
| Zoning | M-C1 d109 |

Listing Details

| | |
|----------------|--------------------|
| Listing Office | First Place Realty |
|----------------|--------------------|

Data is supplied by Pillar 9â„¢ MLS® System. Pillar 9â„¢ is the owner of the copyright in its MLS® System. Data is deemed reliable but is not guaranteed accurate by Pillar 9â„¢. The trademarks MLS®, Multiple Listing Service® and the associated logos are owned by The Canadian Real Estate Association (CREA) and identify the quality of services provided by real estate professionals who are members of CREA. Used under license.