

\$1,334,900 - 5 Eaton Terrace, Rural Rocky View County

MLS® #A2245773

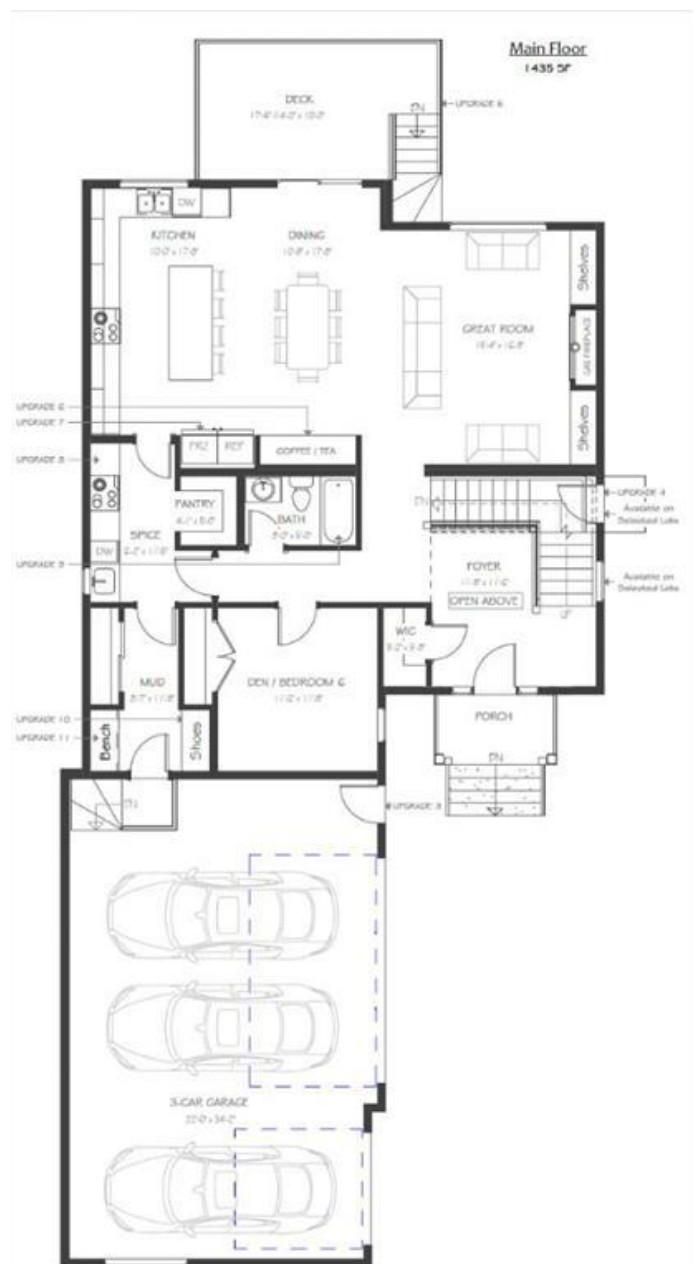
\$1,334,900

5 Bedroom, 4.00 Bathroom, 3,203 sqft

Residential on 0.14 Acres

Cambridge Park, Rural Rocky View County, Alberta

OPEN HOUSES SATURDAY & SUNDAY AUGUST 30 & 31 FROM 1 PM- 3PM WILL BE HELD AT 7 & 11 DUHRAM WAY Welcome to the brand new development of Knightsbridge in Cambridge Park. Minutes away from access to Stoney Trail and East Hills shopping centre. The Whitehaven is a stunning estate home designed to blend luxury and practicality. Set on a generous 6027 sq ft lot, this home provides an expansive backyard and a side-drive triple car garage. These are not your typical cookie cutter homes. With 3,203 sq ft of living space, this custom-built masterpiece features 5 spacious bedrooms and 4 beautifully designed bathrooms, offering ample room for family and guests. This home is loaded with upgrades including: Main floor full bath, Jack and Jill ensuites for added convenience, High ceilings & a Spice kitchen to enhance your culinary experiences. Inside, the main floor exudes elegance with rich hardwood flooring and 9 ft ceilings with 8 ft doors, and striking black-framed windows that invite natural light. The gourmet kitchen is a chef's dream, complete with an oversized island, a secondary spice kitchen, sleek stainless steel appliances. An open concept formal dining and living area set the stage for gatherings. The main floor also includes a flex room as well as a 4 pc bathroom. The primary suite on the upper floors is a true sanctuary with a freestanding tub and a custom-built closet. The home's thoughtful design



continues with 3 more generous sized bedrooms on the second floor, a bonus room for entertaining, a Jack & Jill ensuite bathroom for convenience, as well as a second floor laundry room. . Step outside to enjoy a completed rear deck with steps leading to a private outdoor oasis. This home also offers a triple attached garage allowing plenty of space for extra parking. This community is within minutes to Calgary, Chestermere, and East Hills, 18 minutes to Downtown Calgary, and provides quick access to Stoney Trail, Highway 1, and McKnight Blvd making it easy to get anywhere in and around the city. Located near shopping centres, Costco, public and private schools, Khalsa school's, parks, and many other amenities, while still offering quiet country-living with wide open green spaces, walking paths, and playgrounds.

Built in 2026

Essential Information

MLS® #	A2245773
Price	\$1,334,900
Bedrooms	5
Bathrooms	4.00
Full Baths	4
Square Footage	3,203
Acres	0.14
Year Built	2026
Type	Residential
Sub-Type	Detached
Style	2 Storey
Status	Active

Community Information

Address	5 Eaton Terrace
Subdivision	Cambridge Park
City	Rural Rocky View County

CountyRocky View County

ProvinceAlberta

Postal CodeT1Z 0A1

Amenities

AmenitiesOther

Parking Spaces6

ParkingTriple Garage Attached

of Garages3

Interior

Interior FeaturesOpen Floorplan

AppliancesDishwasher, Gas Range, Ref

HeatingForced Air

CoolingNone

FireplaceYes

of Fireplaces1

FireplacesGas

Has BasementYes

BasementFull, Unfinished

Exterior

Exterior FeaturesOther

Lot DescriptionRectangular Lot

RoofAsphalt Shingle

ConstructionCement Fiber Board, Concrete, Wood Frame

FoundationPoured Concrete

Additional Information

Date ListedAugust 8th, 2025

Days on Market24

ZoningR-1

HOA Fees100

HOA Fees Freq.MON

Listing Details

Listing OfficeCIR Realty

Data is supplied by Pillar 9â„¢ MLSÂ® System. Pillar 9â„¢ is the owner of the copyright in its MLSÂ® System. Data is deemed reliable but is not guaranteed accurate by Pillar 9â„¢. The trademarks MLSÂ®, Multiple Listing ServiceÂ® and the associated logos are owned by The Canadian Real Estate Association (CREA) and identify the quality of services



provided by real estate professionals who are members of CREA. Used under license.