

\$1,474,900 - 249 Eaton Terrace, Rural Rocky View County

MLS® #A2247156

\$1,474,900

5 Bedroom, 5.00 Bathroom, 3,643 sqft
Residential on 0.19 Acres

Cambridge Park, Rural Rocky View County,
Alberta

*OPEN HOUSES SATURDAY & SUNDAY
AUGUST 30 & 31 FROM 1 PM- 3PM WILL BE
HELD AT 7 & 11 DUHRAM WAY* Welcome to
the brand new development of Knightsbridge
in Cambridge Park. Minutes away from access
to Stoney Trail and East Hills shopping centre.
The EVERLY is a stunning estate home
designed to blend luxury and practicality. Set
on a generous 8208 sq ft lot, this home
provides an expansive backyard and a
side-drive FOUR car garage. These are not
your typical cookie cutter homes. With 3,643
sq ft. of living space, this custom-built
masterpiece features 5 spacious bedrooms
and 4.5 beautifully designed bathrooms,
offering ample room for family and guests.
This home is loaded with upgrades including:
Main floor full ensuite bath as well as an
added powder room, ensuite bathrooms
upstairs for added convenience, high ceilings
& a Spice kitchen to enhance your culinary
experiences. Inside, the main floor exudes
elegance with rich hardwood flooring and 9 ft
ceilings with 8 ft doors, and striking
black-framed windows that invite natural light.
The gourmet kitchen is a chef's dream,
complete with an oversized island, a
secondary spice kitchen, sleek stainless steel
appliances. An open concept formal dining
and living area set the stage for gatherings.
The main floor also includes a separate flex

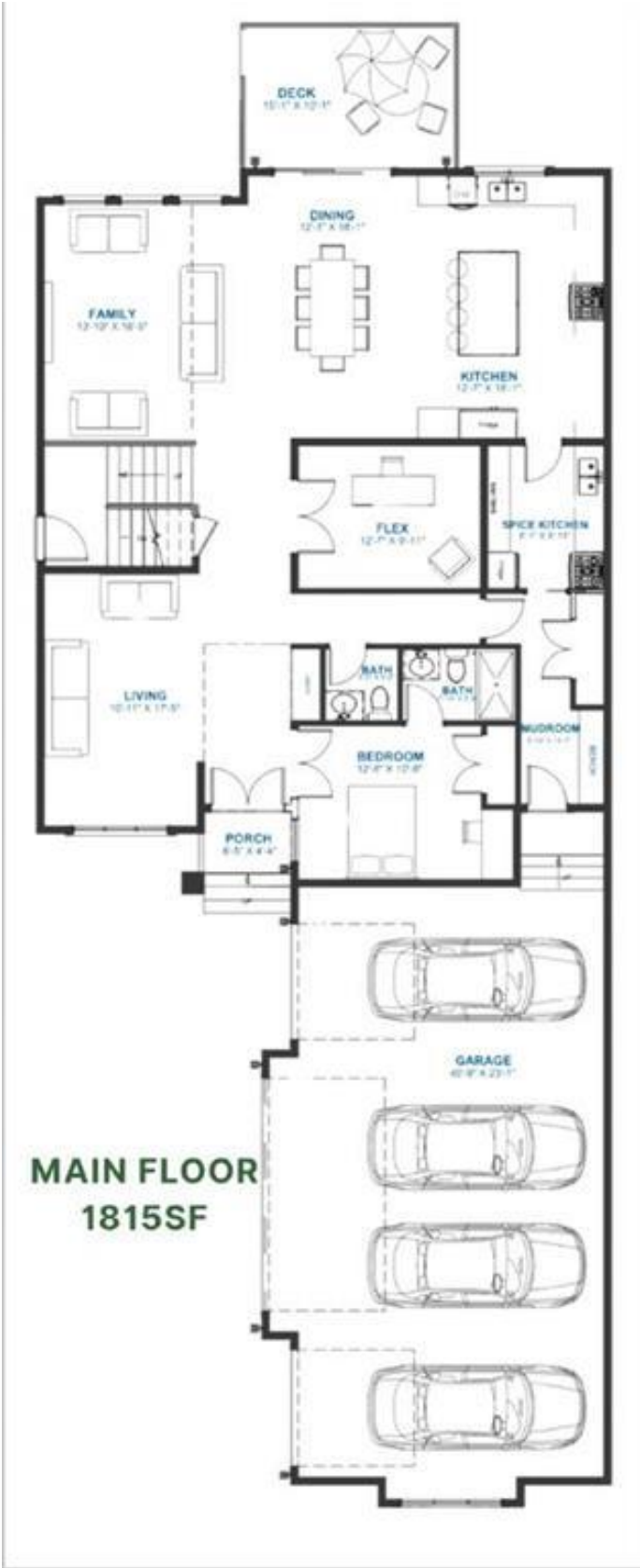


room that can be perfect for a home office or a prayer room. The main floor also feature a spacious bedroom along with a 4 pc ensuite bathroom, perfect for multigenerational living. The primary suite on the upper floor is a true sanctuary with a freestanding tub and a custom-built closet. The homeâ€™s thoughtful design continues with 3 more generous sized bedrooms on the second floor, a bonus room for entertaining, ensuite bathrooms for convenience, as well as a second floor laundry room. Step outside to enjoy a completed rear deck with steps leading to a private outdoor oasis. This home also offers a 4 car attached garage allowing plenty of space for extra parking. This community is within minutes to Calgary, Chestermere, and East Hills, 18 minutes to Downtown Calgary, and provides quick access to Stoney Trail, Highway 1, and McKnight Blvd making it easy to get anywhere in and around the city. Located near shopping centres, public and private schools, Khalsa school's, parks, and many other amenities, while still offering quiet country-living with wide open green spaces, walking paths and playgrounds.

Built in 2026

Essential Information

MLS® #	A2247156
Price	\$1,474,900
Bedrooms	5
Bathrooms	5.00
Full Baths	4
Half Baths	1
Square Footage	3,643
Acres	0.19
Year Built	2026
Type	Residential
Sub-Type	Detached



Style2 Storey
StatusActive

Community Information

Address249 Eaton Terrace
SubdivisionCambridge Park
CityRural Rocky View County
CountyRocky View County
ProvinceAlberta
Postal CodeT1Z 0A1

Amenities

AmenitiesOther
Parking Spaces8
ParkingDriveway, Oversized, Quad c
of Garages4

Interior

Interior FeaturesBuilt-in Features, Open Floor
AppliancesDishwasher, Gas Range, Mic
HeatingForced Air, Natural Gas
CoolingNone
FireplaceYes
of Fireplaces1
FireplacesGas
Has BasementYes
BasementFull, Unfinished

Exterior

Exterior FeaturesOther
Lot DescriptionLevel, Rectangular Lot, Street Lighting
RoofAsphalt Shingle
ConstructionCement Fiber Board, Concrete, Wood Frame
FoundationPoured Concrete

Additional Information

Date ListedAugust 8th, 2025
Days on Market24
ZoningR-1



HOA Fees	100
HOA Fees Freq.	MON

Listing Details

Listing Office	CIR Realty
----------------	------------

Data is supplied by Pillar 9â„¢ MLS® System. Pillar 9â„¢ is the owner of the copyright in its MLS® System. Data is deemed reliable but is not guaranteed accurate by Pillar 9â„¢. The trademarks MLS®, Multiple Listing Service® and the associated logos are owned by The Canadian Real Estate Association (CREA) and identify the quality of services provided by real estate professionals who are members of CREA. Used under license.